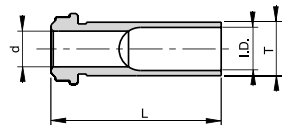
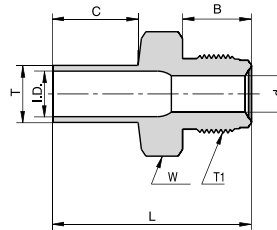


HGL

**LONG HIGH FLOW GLAND**

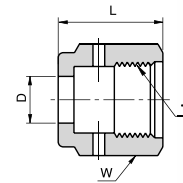
Ordering Information	Face Seal Size	L		d		T Tube O.D	I.D.	
	inch	mm	inch	mm	inch	inch	mm	inch
V-HGL-3/8 - 0.6	1/4	15.2	0.60	6.4	0.25	3/8	7.7	0.30
V-HGL-3/8 - 1.13	1/4	28.7	1.13	6.4	0.25	3/8	7.7	0.30
V-HGL-3/8 - 1.19	1/4	30.2	1.19	6.4	0.25	3/8	7.7	0.30
V-HGL-3/8 - 1.31	1/4	33.3	1.31	6.4	0.25	3/8	7.7	0.30

HMT

**HIGH FLOW MALE TO TUBE**

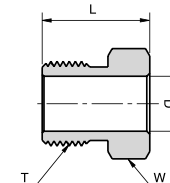
Ordering Information	Face Seal Size	L		B		C		d		W	T Tube O.D.	T1 Thread Size	I.D.	
	inch	mm	inch	mm	inch	mm	inch	mm	inch	inch	inch	inch	mm	inch
P- HMT 1/4	1/4	42.7	1.68	15.8	0.62	19.1	0.75	6.4	0.25	5/8	3/8	9/16 - 18	7.7	0.30

HNF

**HIGH FLOW FEMALE NUT**

Ordering Information	Face Seal Size	L		D		W	T Thread Size
	inch	mm	inch	mm	inch	inch	inch
P - HNF 1/4	1/4	20.6	0.81	10.0	0.39	3/4	9/16 - 18

HNM

**HIGH FLOW MALE NUT**

Ordering Information	Face Seal Size	L		D		T Thread size	W
	inch	mm	inch	mm	inch	inch	inch
P - HNM 1/4	1/4	18.0	0.71	10.0	0.39	9/16 - 18	5/8

Dimensions are for reference only, and are subject to change without notice.

When ordering, be sure to add the Surface-Finish Designator (either H or E) to the Part Number. (See Material Table, page 157).